

Rules governing data handling (Mai 2018)

The following requirements enable smooth operation in the production of your print products.

Possible programs:

Open files:

 Adobe Photoshop Version CC

 Adobe Illustrator Version CC

 Adobe InDesign Version CC

Closed files:

 Adobe Acrobat Version PRO DC

If so-called open print data are supplied, either all used writings with complete character sets must be provided or all writings must be vectored.

Data should in **PDF / X-3** standard ideally be delivered.

Subsequent corrections in the supplied PDF files, we can make with the program **PitStop Pro 13** against payment.

Resolution and image formats:

- Images 300 dpi, logos and line drawings 900-1200 dpi
- EPS, TIFF and JPEG (only in maximum quality)
- Color space must be **CMYK**, no RGB

Color-accurate proofs:



- For color matching while printing a color-accurate digital-proof is required in accordance with ISO standard.

Without providing a color-accurate proof no warranty claims for the color accuracy of the printed object can be accepted. If you wish, we can (with test certificate) create these proofs for you. We will gladly make you an offer.



Barcodes:

We can only assume responsibility for codes corresponding to the CCG standard. If you are unable to create such a code please set the code number at the respective place - we will create the correct code against payment. In print-ready data, the data manufacturer is liable for any necessary post-processing of the barcode for example of unreadable codes.

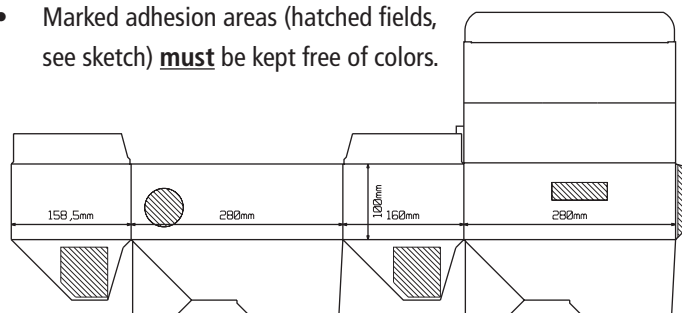
There should be sufficient contrast between the background color and encoding. Left and right light Zone must be adhered.

Other defaults:

- Please use the obligatory size from the digital cutting outlines prepared by us for register-true lithographic production (Please request!) - **not from** specimen!
- The required trapping over the gross size of the outline should be at least 3 mm, in case of lined flute at least 5mm. Outside areas should be transparent.

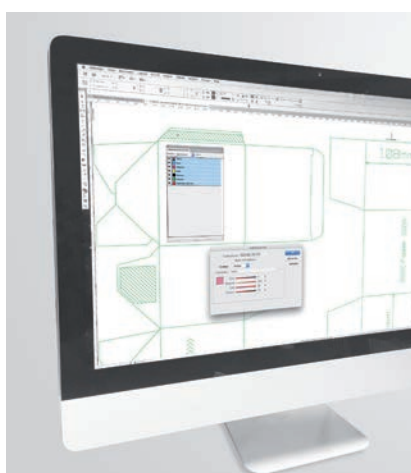
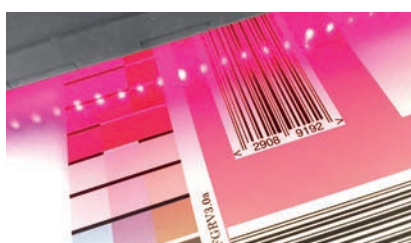
Punching outline:

- For the structure of the artwork, the digital punching outline on a scale 1:1, obligatory of us, may be used only. This is to be request before the creation of the print data.
- Marked adhesion areas (hatched fields, see sketch) **must** be kept free of colors.



Rules governing data handling

General:



- The total color layout should **not** exceed 280%.
- Do not use or store **any color management** and raster settings in the image files.
- It is absolutely necessary to supply all images, logos and line files of the document.
- Please enclose the used fonts or convert all texts into character paths.
- Line weights should be at least 0.15 mm.
- In order to minimize register faults, text or image elements should have a distance of at least 2 mm to all cutting rules, for corrugated packaging at least 4 mm.
- Do not create trapping or under-filling in the document (we will do this according to printing defaults).
- Special colors must be created as such and be marked with **Pantone or HKS numbers**. If you have your own colors requests, please supply color samples. **Colors which are not used must be removed!**
- **For the graphic designer:** If the data are transmitted by email, please make reference to the customer and the product. It is necessary to provide the name of a contact person with phone number for further questions.
- **Delivery of PDF files:** A **low-resolution PDF file with** die-cutting template, a **print-optimised PDF file with no** die-cutting template (**with embedded text**), a **print-optimised PDF file with no** die-cutting template (**text converted into paths**). **The PDF files must be displayed at the same page size in Acrobat.**

Please supply a color and text-binding proof for print control.

One more note:

Please make sure that the data you deliver are virus-free and tested.

To assure a smooth process, you can contact our experts in the prepress department via email; mac@fmsag.de

Thank you



FMS AG Leutershausen

FMS AG Krölpa

Druckereistraße
D-91578 Leutershausen

Schenkenhügel 5
D-07387 Krölpa

Telefon: +49 (0) 98 23/88-0
Telefax: +49 (0) 98 23/88-57

Telefon: +49 (0) 36 47/46 98-0
Telefax: +49 (0) 36 47/46 98-40

www.fmsag.de
info@fmsag.de

www.fmsag.de
info.kr@fmsag.de

► Please send your punching drawing to:

e-mail Leutershausen: w.assenbaum@fmsag.de
e-mail Krölpa: daten.kr@fmsag.de

► Please send your data to:

e-mail Leutershausen: mac@fmsag.de
e-mail Krölpa: daten.kr@fmsag.de